












-  Property
-  Chevron Soil Limited Admission Areas
-  Chevron Groundwater Limited Admission Areas
- LDNR Registered Oil and Gas Wells**
-  Directional Well Surface Location
-  Status 3 Permit Expired/No Product Code
-  Status 22 Wells Reverted To Single Completion
-  Status 23 Orphan Wells
-  Status 29 P&A Dry Hole
-  Status 30 P&A Oil Producer

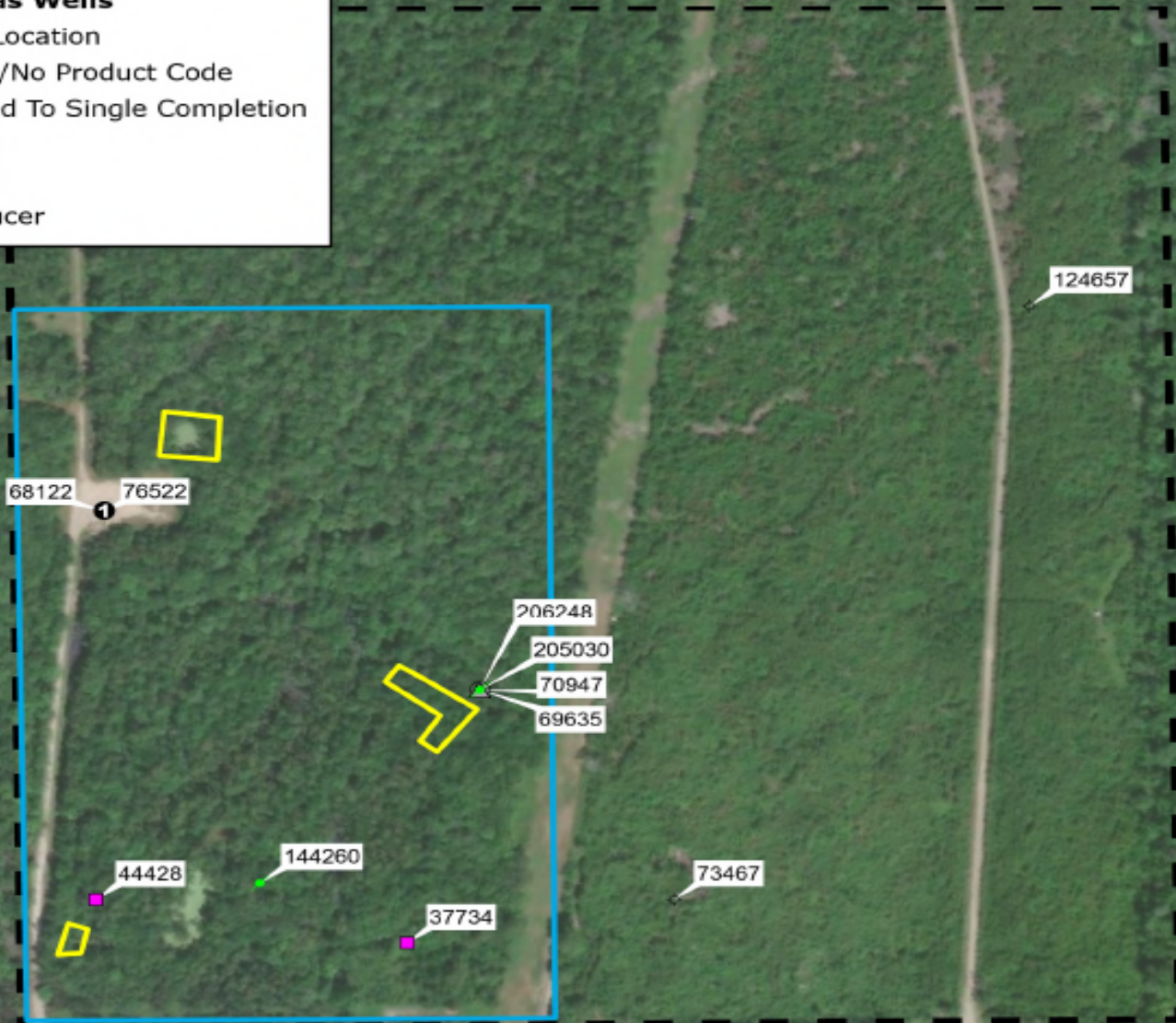


EXHIBIT A

